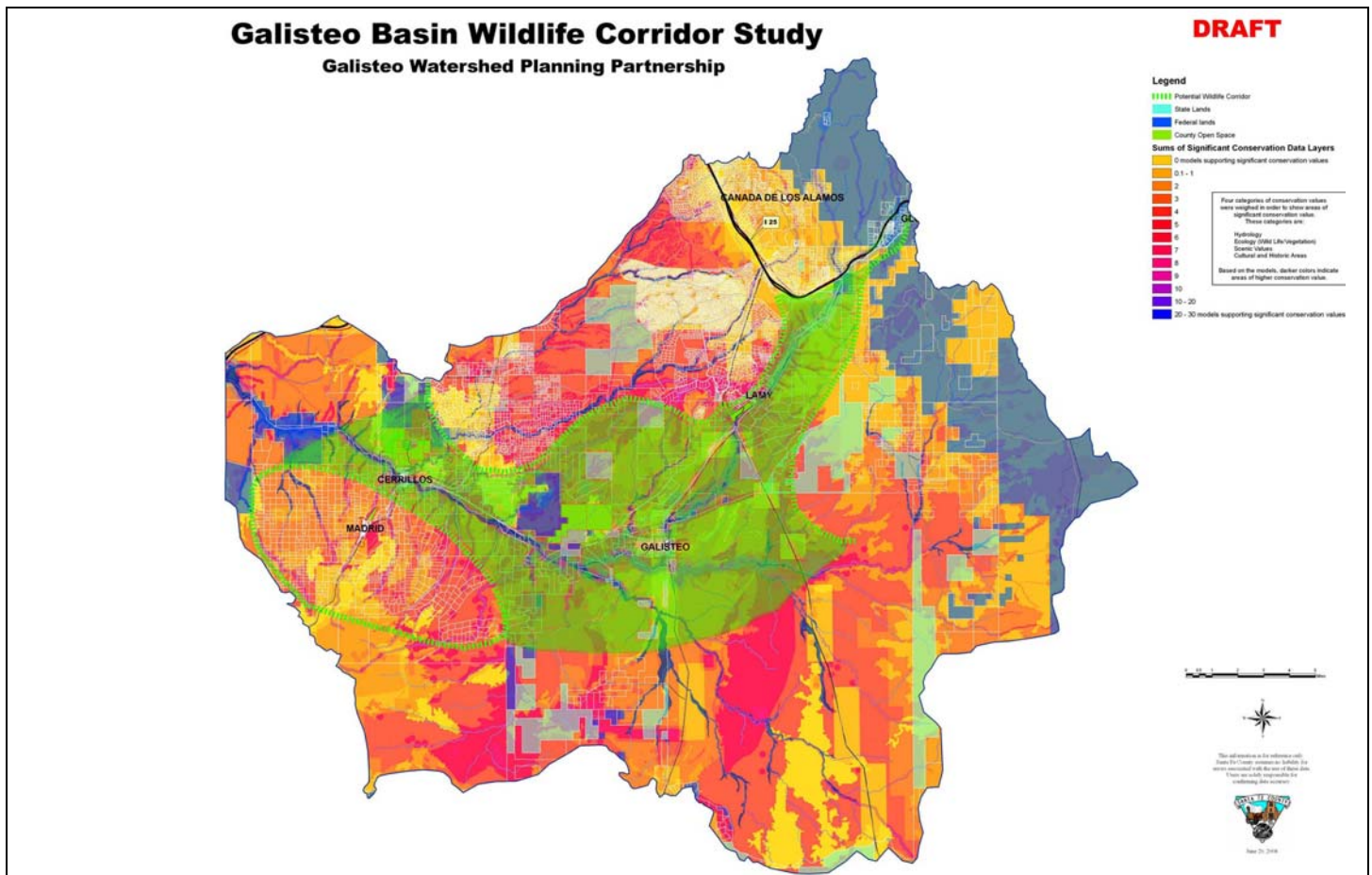


# Proposed Galisteo Basin Wildlife Corridor



**Map key:** The bright green band represent the core area of the proposed Galisteo Basin wildlife corridor. Colors ranging from yellow to purple indicate increasing significance of conservation value. The represented values are the sum of hydrological, ecological, cultural/historical, and scenic value models.

## Common Vision of the Galisteo Watershed Partnership

The Galisteo Watershed Partnership (GWP) was formed in 2005 as a voluntary network of private organizations, government agencies and individuals, with an active interest in the future of the 730-square mile Galisteo Watershed. The purpose of the GWP is to share information, organize public education initiatives, and serve as a coordination body for outreach and planning regarding natural resources planning, urban development and conservation initiatives in the Galisteo watershed. The GWP is shaped and guided by a set of shared principles, which include that area growth for commercial and residential development should be ecologically sensitive, strategies should be implemented to conserve important ecological and cultural areas, and the watershed community should be more self-sustaining.

## Galisteo Basin Wildlife Corridor Proposal

The GWP proposes to establish the Galisteo Basin Wildlife Corridor as the northern most part of the Sandia-Manzano Wildlife Linkage for safe wildlife migration along the “Spine of the Continent” of North America. We are proposing a wildlife corridor to connect the vital habitats of the Sandia and Ortiz Mountains to the Sangre de Cristo Mountains running from BLM lands south of Golden, across lands in the Galisteo Basin, to US Forest Service lands on Glorieta Mesa and in the Sangre de Cristos. In this wildlife corridor, we will promote the safe passage of native and migratory animal species through land conservation, appropriate road & highway crossings, specific native plantings for forage and cover, enhanced access to riparian areas and other water sources, voluntary landowner monitoring and reporting of species, community education, and landscape restoration projects.

## Galisteo Basin Wildlife Corridor Outreach Action

On June 20, 2008, The Galisteo Watershed Partnership (GWP) held a meeting to discuss the wildlife corridor proposal with landowners, residents, conservation organizations and government agencies. Participants supporting the proposal include Commonweal Conservancy, Earth Works Institute, technical staff from the New Mexico Department of Game and Fish, New Mexico Wilderness Alliance, New Mexico Wildlife Federation, Pathways, Rural Conservation Alliance, Rewilding Institute, Santa Fe Conservation Trust, Santa Fe County Planning and Open Space Divisions, Santo Domingo Pueblo, Quivira Coalition, The Nature Conservancy, US-285 Coalition, WildEarth Guardians, Wild Prairie Partners, and many area landowners and residents. Meeting participants agreed to form several action committees to further the proposed corridor plan. Action committees include a Wildlife Tracking Group, a Safe Highway Passage Group, a Small Landowners Outreach Group, a Media Group, and Fund Raising Group.

The GWP and the associated proponents of the wildlife corridor in the Galisteo Basin stress that ***preserving the Galisteo Watershed's open natural lands protects quality of life for both wildlife and people!*** Additional motivations for the plan include:

- ✚ Preserving our natural lands safeguards the Galisteo Basin's unique spiritual and aesthetic qualities
- ✚ Preserving and managing our open lands ensures economic vitality now and for future generations
- ✚ Protecting our land preserves our natural and cultural heritage and ensures a legacy for the future

Our wildlife is a crucial part of living on the land and making a living off the land. Stewardship of wildlife and wildlife habitat ensures that the multiple benefits and usages that currently exist on the land will be maintained. All potentially beneficial land uses in the Galisteo Basin must take priority over any single proposed land use plan that will render the land and/or water undesirable or unsuitable for multiple uses in the future. Species of concern that will benefit from this stewardship are the golden eagle, mountain plover, long-billed curlew, scaled quail, juniper titmouse, loggerhead shrike, ferruginous hawk, Baird's sparrow, Gunnison's prairie dog, pronghorn antelope, spotted bat and Townsend bat.



Photo Courtesy WildEarth Guardians and NM Department of Game & Fish.

## The Galisteo Basin Wildlife Corridor Needs Government Support!

The GWP and its associated wildlife corridor partners request that The Governor of New Mexico:

- ✚ Recognizes the vital importance of the continued preservation of the Galisteo Basin's open, natural lands for the ongoing protection of the quality of life for both wildlife and people.
- ✚ Directs the NM Department of Transportation to develop means for safe wildlife passage across highways through the Basin to increase public safety and wildlife survival.
- ✚ Works with the NM Department of Game & Fish and the Energy, Minerals and Natural Resources Department to support wildlife data collection initiatives as well as technical and financial incentives programs for landowners to establish the wildlife corridor and associated wildlife preserves on the ground.
- ✚ Support public and school education about wildlife conservation in the area.

***For More Information, please contact the Galisteo Watershed Partnership at Earth Works Institute at 505-982-9806 or email [jwj@earthworksinstitute.org](mailto:jwj@earthworksinstitute.org).***